

RFID
JOURNAL
LIVE!

20 **YRS**
2003 - 2022

MAY 17 - 19, 2022
MANDALAY BAY | LAS VEGAS, NV

Delta Invests in RFID Expansion

Brandon Woodruff

Manager, Airport Customer Service Tools, Infrastructure & Technology

Background

- Implementation of barcode scanning in 2010
- In 2014, barcode scan rate peaked at 97% or 4M missed baggage tracking opportunities
- RFID proved to be most effective and cost-efficient technology to bridge 3% tracking gap
- Initial RFID deployment in 2016
- \$50M investment



By the Numbers

- 344 Stations
- 700 Pier & Claim Readers
- 1,600 Belt Loaders
- 3,900 Printers
- 6,000 Scanners
- 120,000,000 RFID enabled bag tags



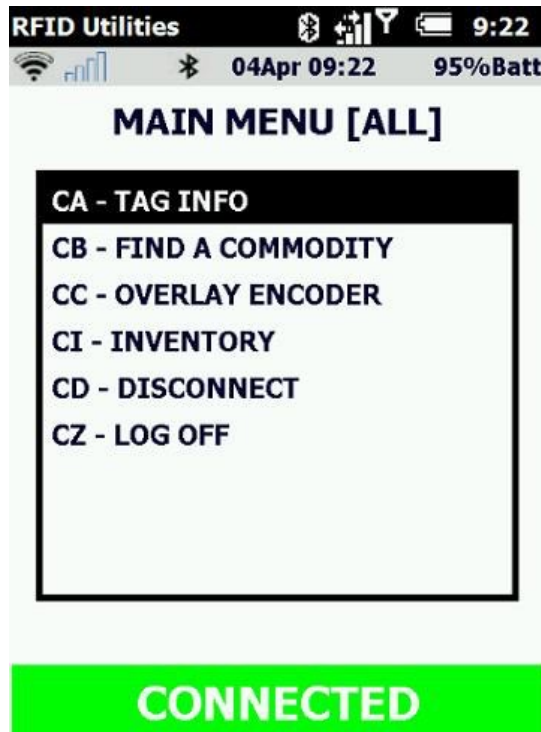
Benefits

- Enable hands-free scanning to:
 - Increase baggage tracking and visibility; manage bags by exception
 - Improve loading and offloading efficiency
 - Reduce Global Injury Rates
- Deliver scan rates of 99.9%
- More efficient handling and recovery during irregular operations
- “Dot on a Map” baggage tracking
- Real time push notifications to passengers



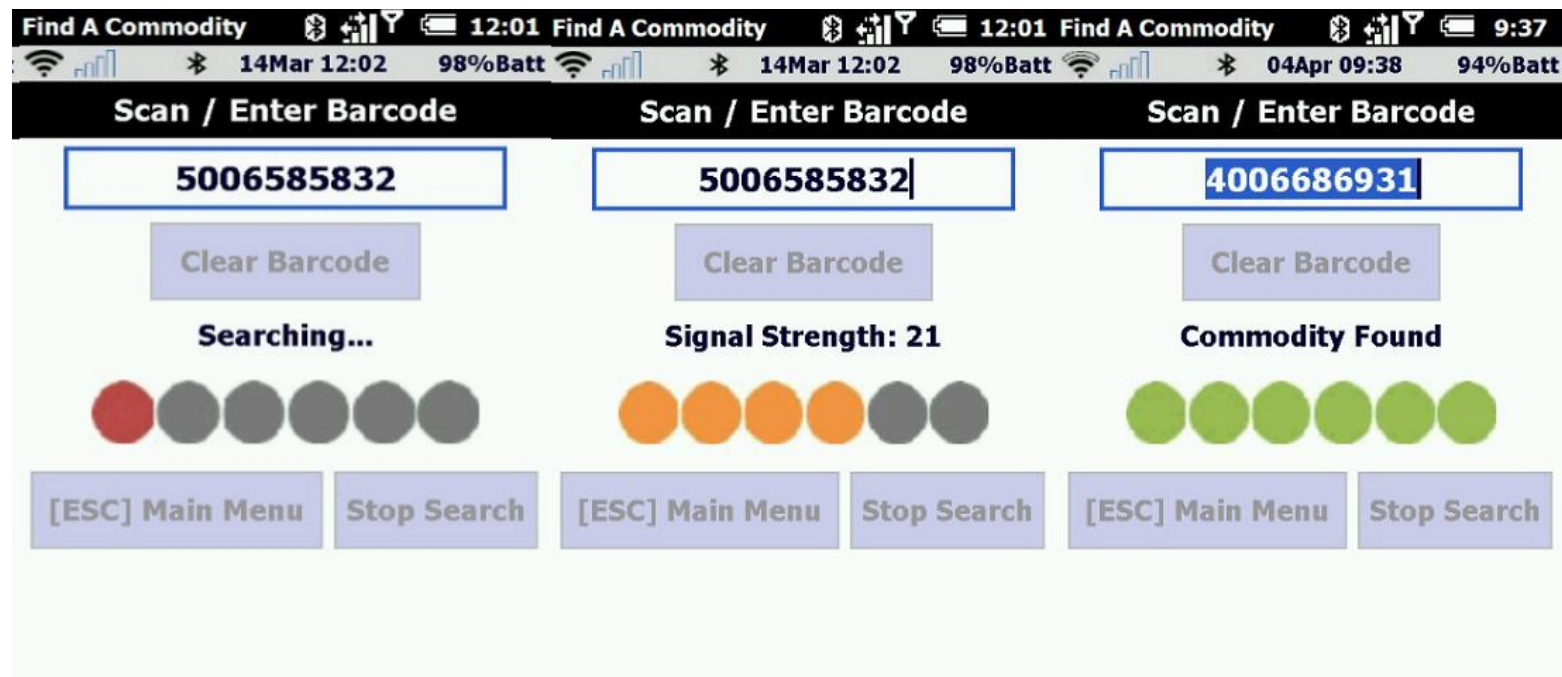
Applications

- RFID Utilities – Inventory



Applications 2

- RFID Utilities – Find a Commodity



Applications 3

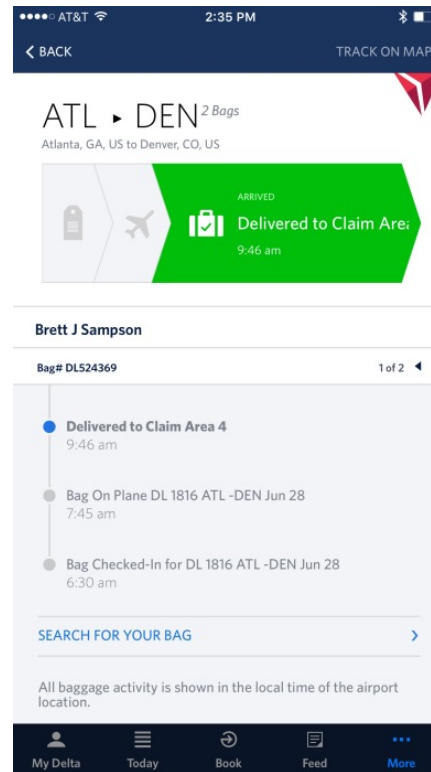
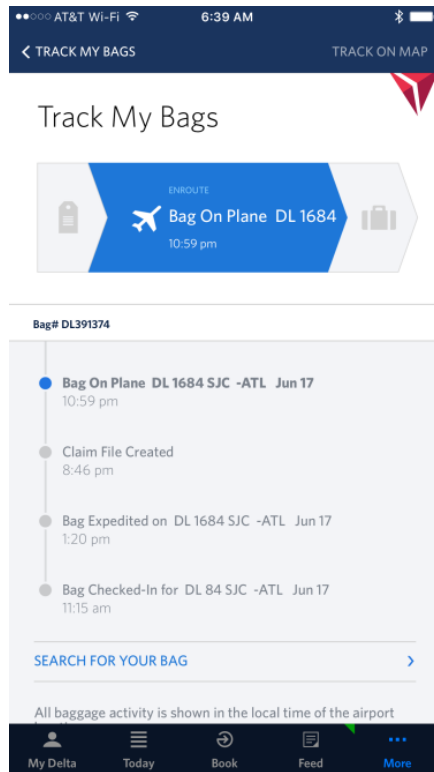
- Nexus – Map View
 - Dot on a map for last seen location

The screenshot displays the Delta Bag Mapping application interface. At the top, a flight information box for flight 1699 (Date 05Sep, Gate B29, AC 916, ATL to TYS, SKD 14:12 (00:24)) is visible. Below this, a map of the airport terminal area is shown with several green location pins. A pop-up window is open over one of the pins, displaying a table of bag tracking data.

Bag Tag	Status	Time...	Last Seen Location	In Flt #...	From...	Gate...	PNR	Passenger Name
8006333167		13:12	ATL Arrival Offload BIN 1 DL2460 (DC...	2460	DCA		GSWN8G	PATRICELLIJR, VII

Applications 4

- Fly Delta App



Hardware

- FX7500
- FX9600
- IP30
- RFD90
- AN440
- AN720



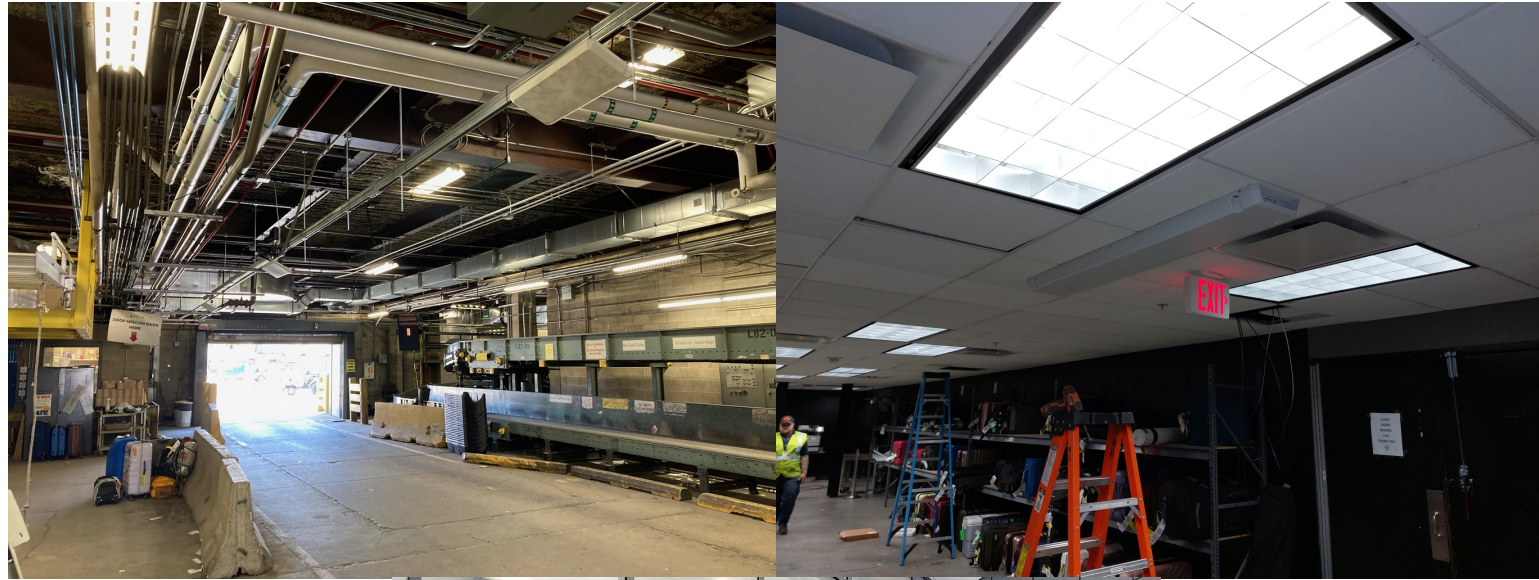
Infrastructure

- Pier & Claim
- Bag Accept
- Oversize
- Bag Room Departure
- Proprietary



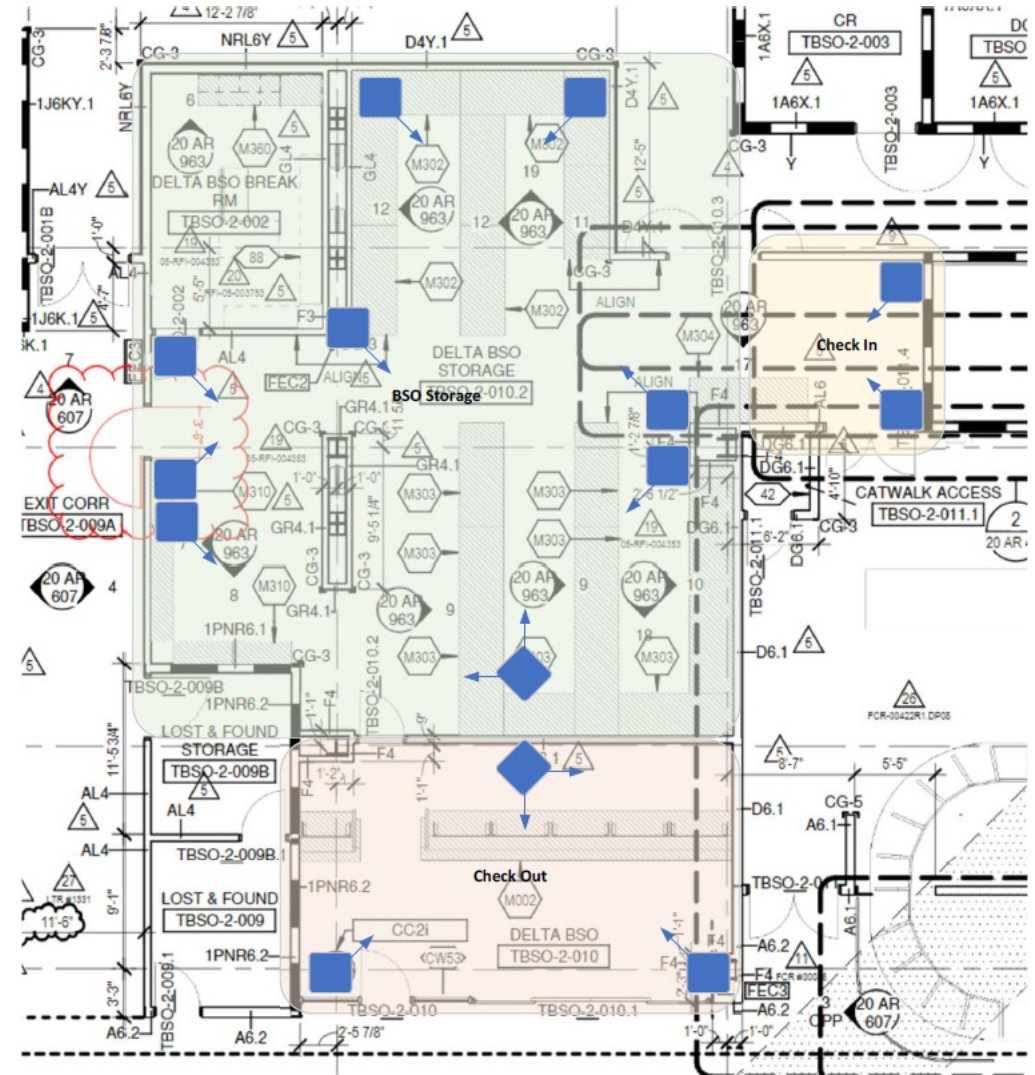
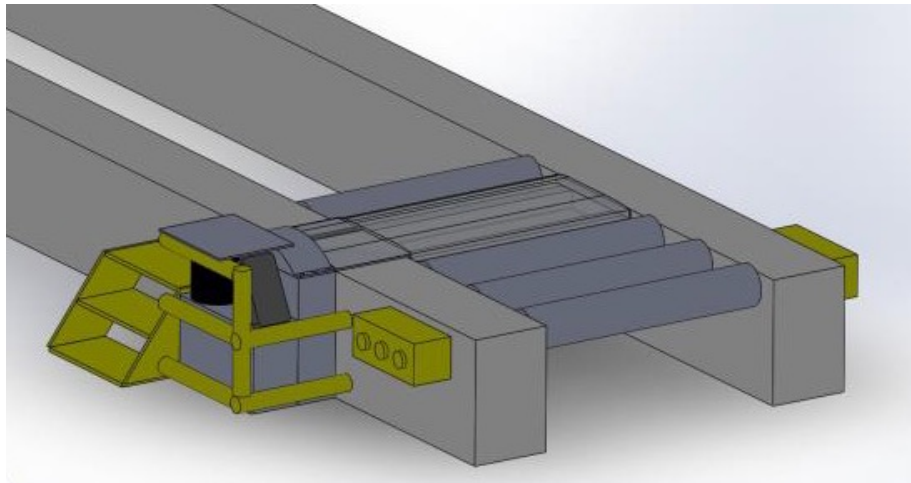
Infrastructure 2

- Reroute
- Baggage Service Office – Entry & Exit
- Public Areas



What's Next?

- Planeside NextGen
- Baggage Service Office – Real Time Inventory



THANK YOU

